

EMC 單相電源雜訊抑制濾波器(雙π迴路)PLC 專用

EMC –Power Line Filter for 1-phase systems (two-stage) for PLC

HUA Series, all-purpose filters to Protection Class I.

0~250VAC 50/60HZ θ_a 40°C EN55011/CLASS A

CE

CONFORMS
TO IEC 60 950
UL 1283
EN 133200

The TP series power filter for high requirements, to Protection EN55022/Class B
These 2-stage filters due to their high symmetrical attenuation loss , are specifically suitable for use in switching power supplies or PLC.

本 TP 系列電源濾波器符合 EN55022/Class B 保護
本雙極電源濾波器由於其高對稱衰減損失，
特別適合用於開關電源供應器或可程式控制器(PLC)。



Specification

Test Voltage (1 min) :L to E 1500VAC/2250VDC

L to L 1500VDC

Insulation Resistance : L to E $\geq 3000M\Omega$

L to L $\geq 2000M\Omega$

Current reduction above 40°C

ambient temperature: $I = I_n \sqrt{(85 - \theta) / 45}$ θ = operating temperature

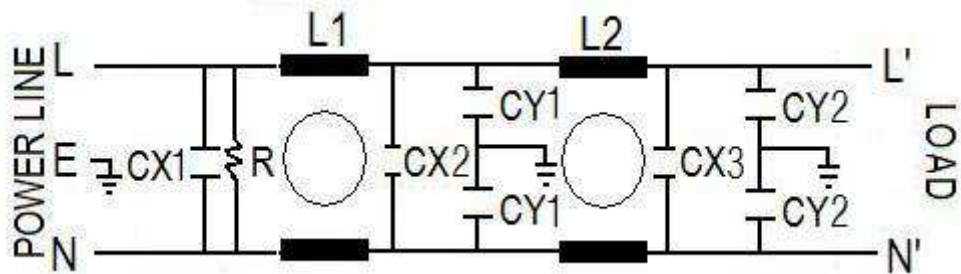
TYPE	In @ $\delta a 40^\circ C$ [A]	Umax		Overload Current	Resistance L-L' $\pm 15\%$ [m Ω]	Power Dissipation total $\pm 15\%$ [W]	Max. leakage current @250v/60hz [mA]	Temperature Rise °C	Temperature Range °C
		AC	DC						
HUA-9010-L103-TP-□	3	AC	DC	1.5×In 1 min. per hour	28	0.252	≤ 2	≤ 30	-25 ~ +85
HUA-9010-L106-TP-□	6	50/60Hz	0Hz		23	0.828		≤ 30	-25 ~ +85
HUA-9010-L110-TP-□	10	0~250	0~80		14.2	1.42		≤ 30	-25 ~ +85
HUA-9010-L115-TP-□	15				13	2.925		≤ 30	-25 ~ +85
HUA-9010-L120-TP-□	20				12	4.8		≤ 30	-25 ~ +85

Order Types (訂購型號說明)

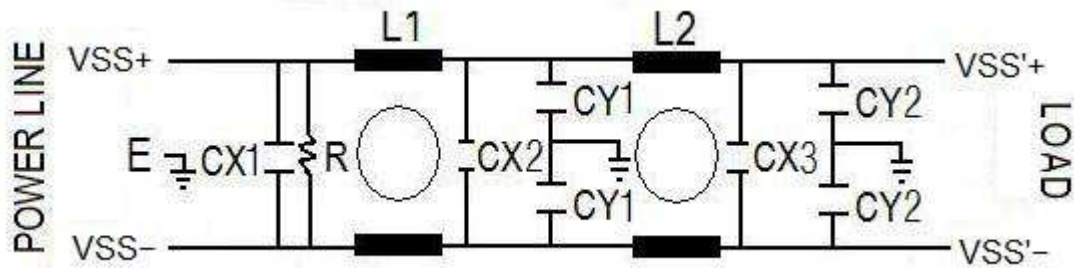
型號:HUA - 9010-L1□- TP-□

- A:AC 電源 D:DC 電源
- 表示 PLC 專用/ T-250 端子出線
- 03:表示 3A 額定電流
- 10:表示 10A 額定電流
- 20:表示 20A 額定電流

Circuit Diagram(電路圖)

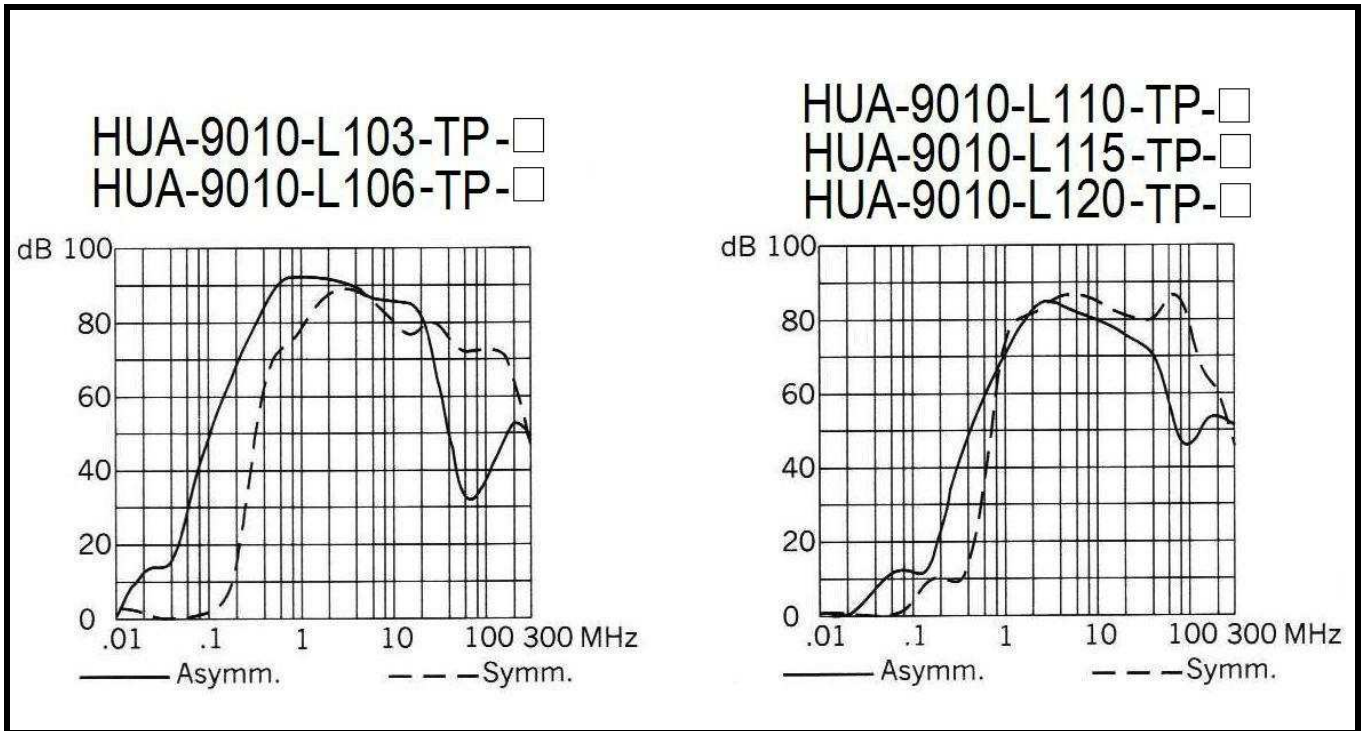


AC 電源



DC 電源

Insertion loss (衰減值)



Dimension(mm) 外殼形式

