

EMC (歐規)高性能/高電流單相電源雜訊抑制濾波器 (單 π 迴路)

High Current Line Filters for 1-phase systems Low leakage current EURO

(one-stage) HUA Series, all-purpose filters to Protection Class 1

0~250VAC 50/60HZ θ a 40°C EN55011 Class A

CE

CONFORMS
TO IEC 60 950
UL 1283
EN 133200

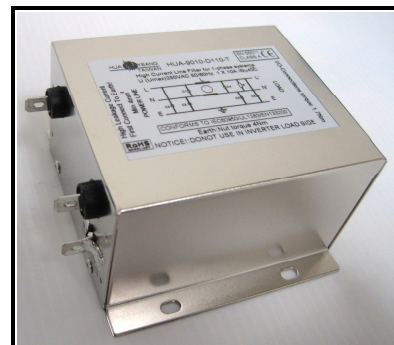
This series of single-phase power supply filter in line with EN55011 Class A / EN55022 Class B protection, with excellent common mode and differential mode interference attenuation performance, suitable for most switching power supplies that can be used to suppress the pulse interference, continuous interference or intermittent interference. This series of single-phase power supply filter in particular, applies to electromagnetic interference, low-impedance load situations, and cheap is its features.

本系列單相電源濾波器符合EN55011 Class A / EN55022 Class B保護,具有優良的共模和差模干擾衰減性能,適用於大多數開關電源,可用來抑制脈衝干擾,連續性干擾或間歇性干擾.本系列單相電源濾波器尤其適用於有電磁干擾的低阻抗負載場合,價格低廉是它的特點.

SPECIFICATION

Test Voltage (1 min) : L to E 1500VAC/2250VDC
L to L 1500VDC

Insulation Resistance : L to E $\geq 3000\text{M}\Omega$
L to L $\geq 2000\text{M}\Omega$



Current reduction above 40°C ambient temperature: $I = I_n \sqrt{(85-\theta)/45}$

θ = operating temperature

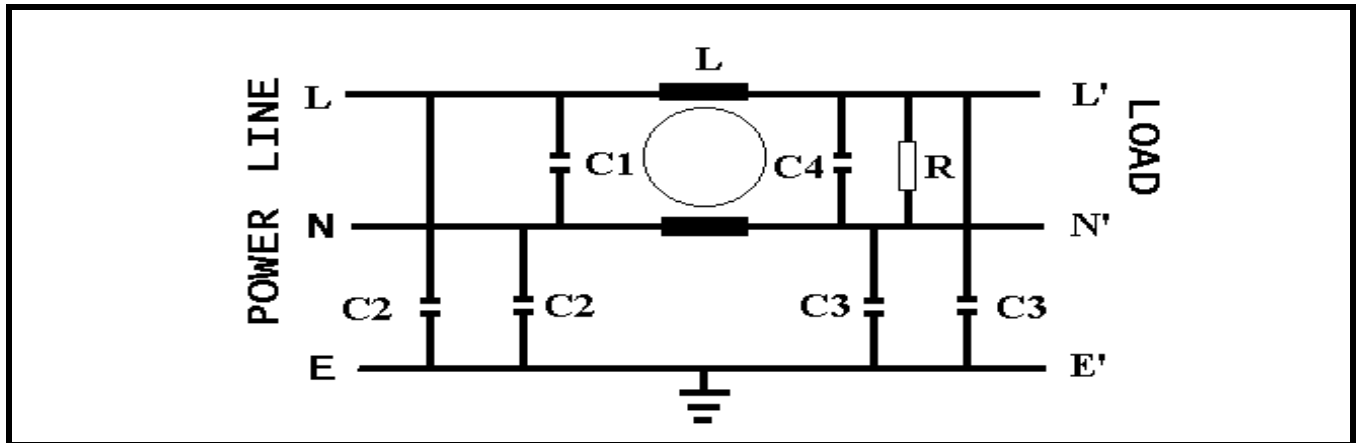
TYPE	In @ $\delta a 40^\circ\text{C}$ [A]	Umax 50/60Hz [v]	Overload Current	Resistance L-L' $\pm 15\%$ [m Ω]	Power Dissipation total $\pm 15\%$ [W]	Max. leakage current @ 250v/60hz		Temperature Rise $^\circ\text{C}$	Temperature Range $^\circ\text{C}$	Fig
						In 1-phase system [mA]	Worst Case [mA]			
HUA-9010-D110-□	1×10	250	1.5×In 1 min. per hour	14.2	1.42	≤ 5	5.2	≤ 30	-25~+85	A/B
HUA-9010-D120-□	1×20			5.8	2.32		5.2	≤ 30	-25~+85	A/B
HUA-9010-D130-□	1×30			2.4	2.16		5.6	≤ 30	-25~+85	A/B
HUA-9010-D150-□	1×50			2.2	5.5		5.6	≤ 30	-25~+85	A/B
HUA-9010-D160-□	1×60			2.1	7.56		5.6	≤ 30	-25~+85	A/B
HUA-9010-D180-□	1×80			2	12.8		5.6	≤ 30	-25~+85	C/D
HUA-9010-D1-100-□	1×100			1.5	15		5.6	≤ 30	-25~+85	C/D

Order Types (訂購型號說明)

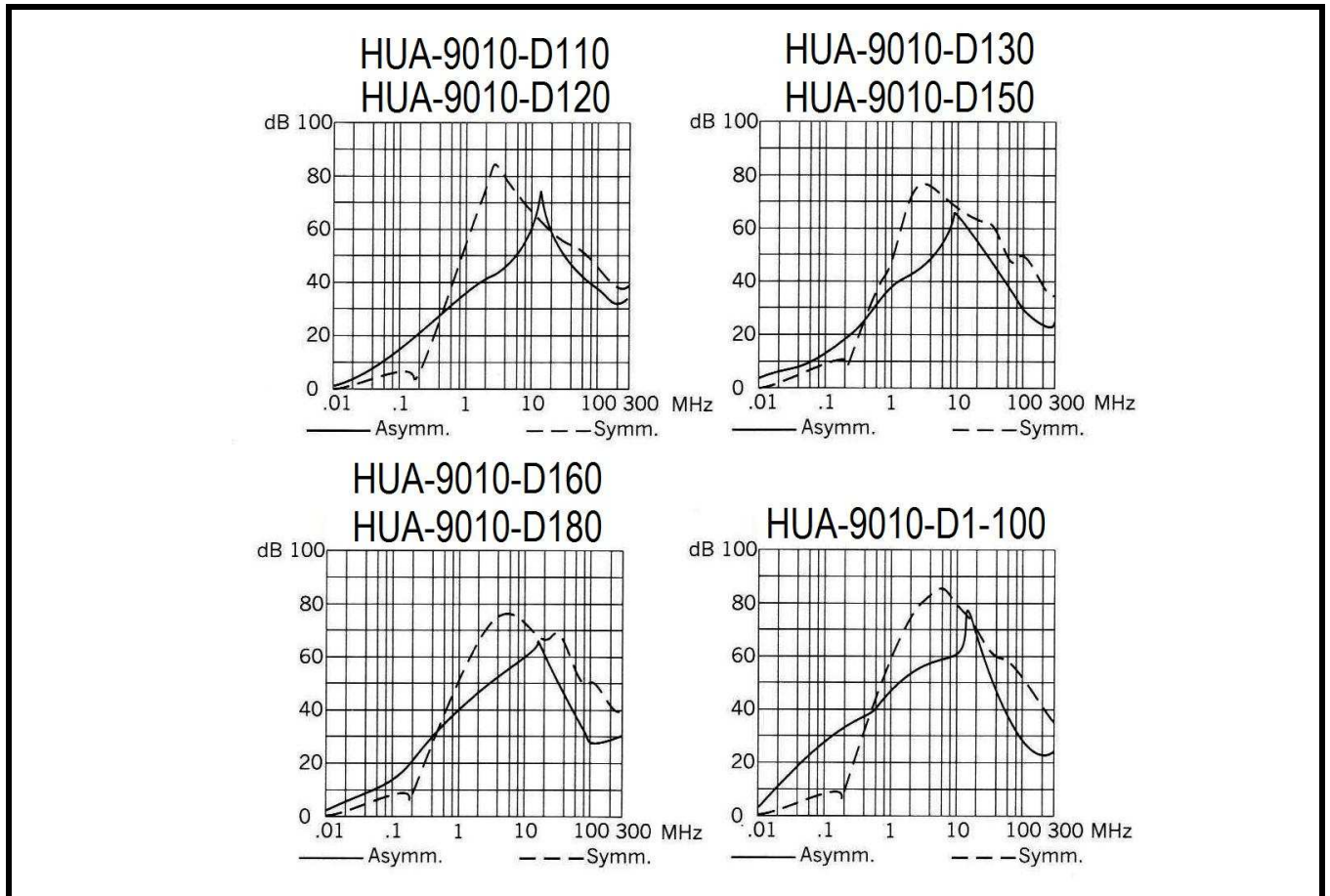
型號:HUA - 9010-D1□- □

- └─┬─> 無: 螺絲出線 (附圖 A/C)
- └─> E: 歐規端子台出線 (附圖 B/D)
- └─┬─> 10:表示 10A 額定電流
- └─> 100:表示 100A 額定電流

Circuit Diagram(電路圖)



Insertion loss (衰減值)



Dimension(mm) 外殼形式

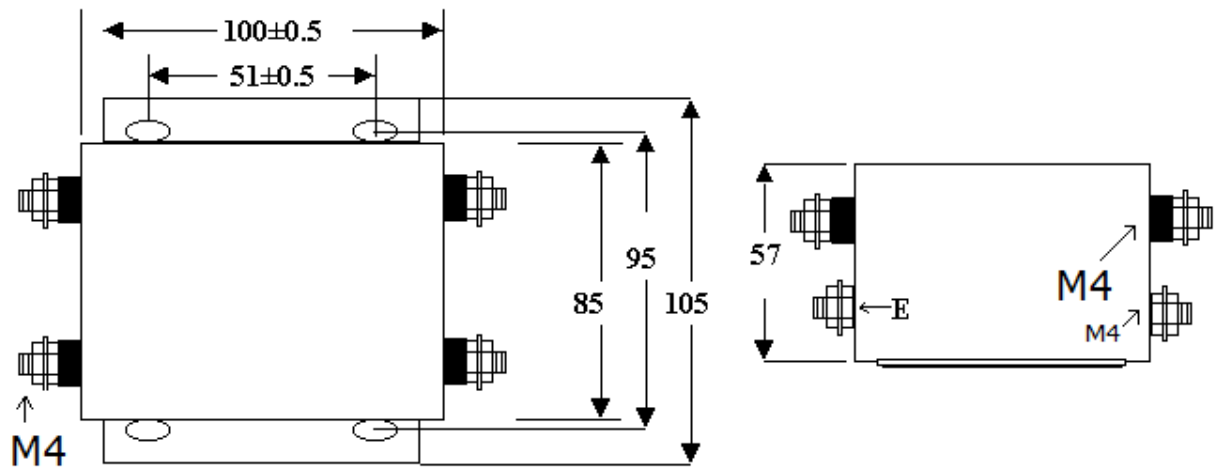


圖 A

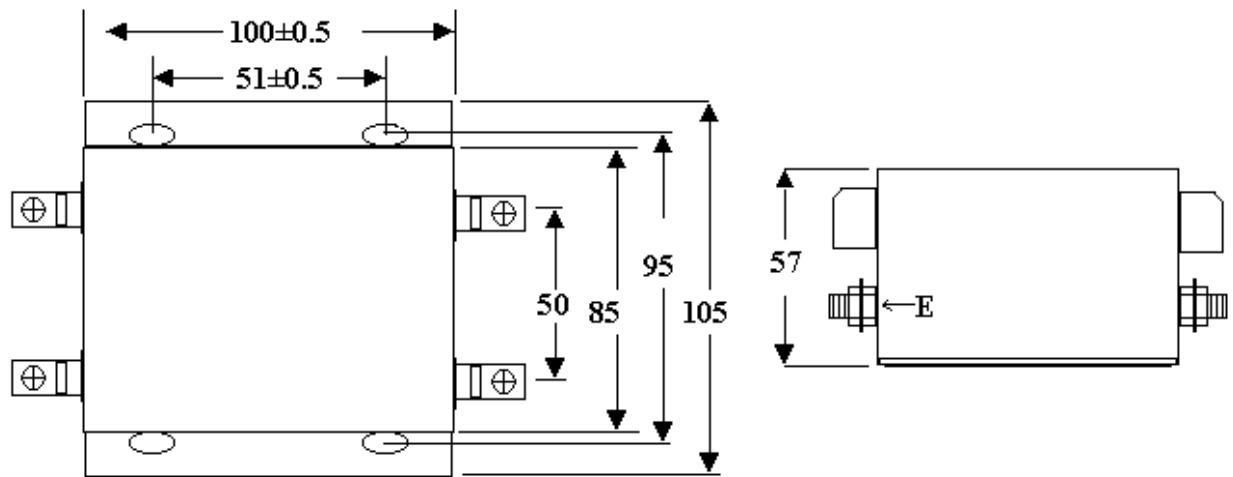


圖 B

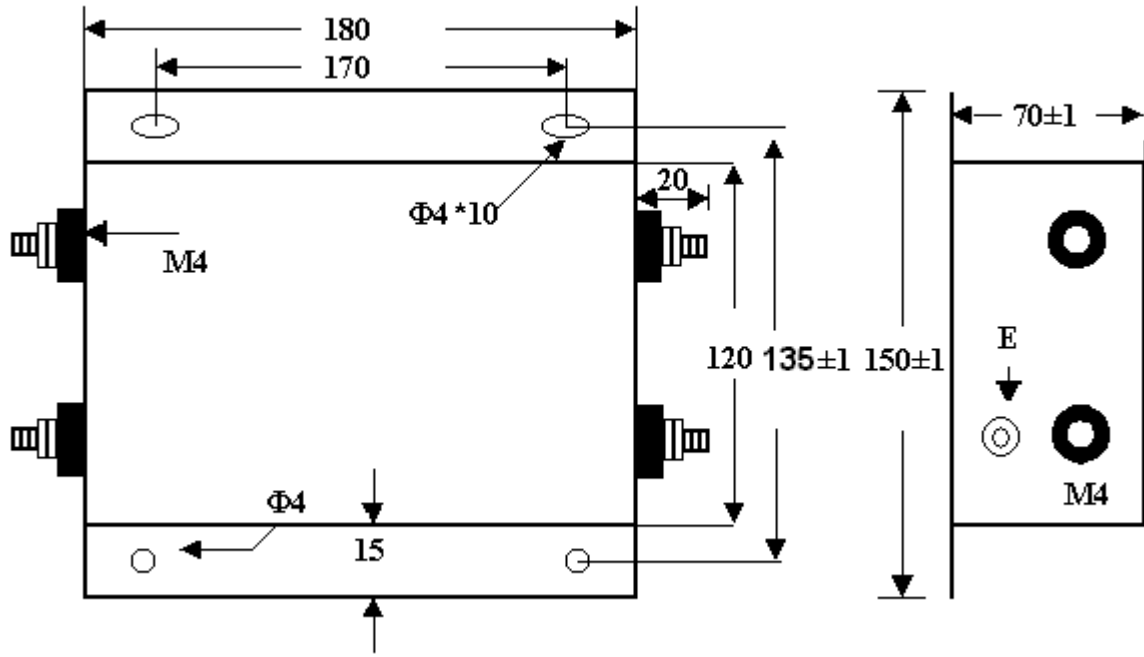


圖 C

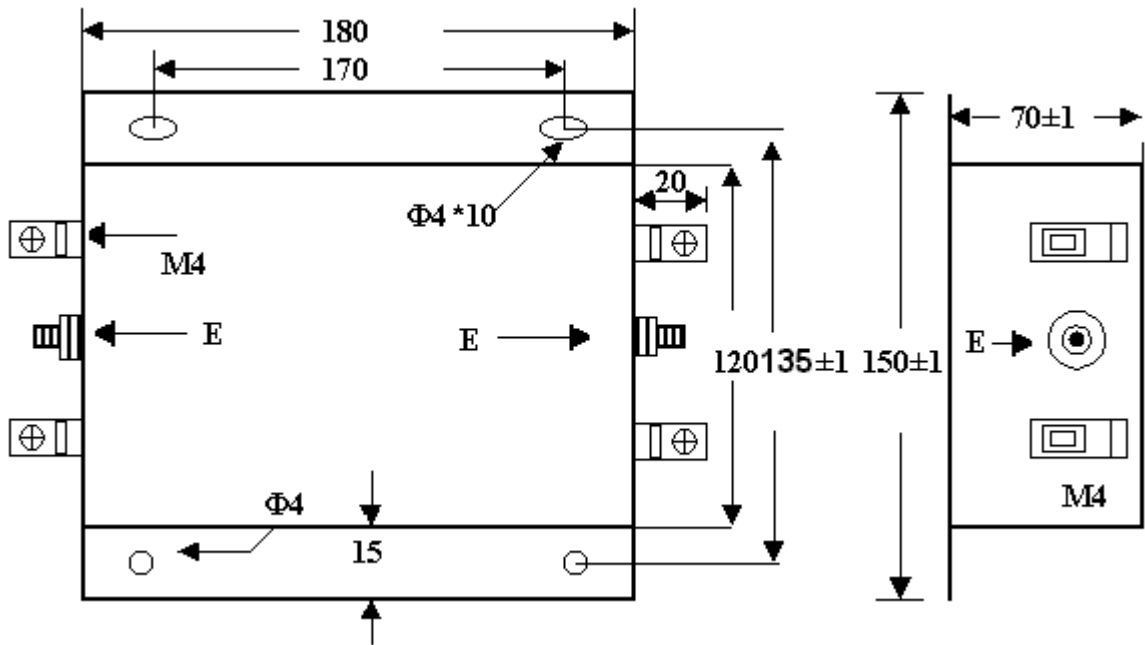


圖 D