

HUA (日規)三相電源雜訊抑制濾波器(雙π迴路) Japan

EMC-High Current/Low leakage Current Line Filters for 3-phase systems

2-stage all-purpose filters to protection Class I , with high symmetrical and asymmetrical insertion loss and low leakage current ,conform to EN133200 ,UL 1283 and IEC 60950

0~480VAC 50/60HZ θ_a 40°C EN55011 /CLASS A

CE

CONFORMS
TO IEC 60 950
UL 1283
EN 133200

This S series of pairs of π -loop three-phase three-wire power filter, energy-saving devices for the inverter power supply system, Applicable to switching power supplies, frequency devices and power electronic products. Applies in particular to curb energy-saving equipment to connect the power inverter system . Produced by interference. Actually applied to machinery and equipment have a very good filter out interference effect.

本 S 系列雙 π 迴路三相三線式電源濾波器,用於變頻電源節能設備連接系統,適用於開關電源,變頻裝置和電力電子產品.尤其適用於抑制變頻電源節能設備連接系統所產生干擾.實際應用於機器設備上有非常不錯濾除干擾效果.

SPECIFICATION

Test Voltage (1 min) :L to E 1500VAC/2250VDC

L to L 1500VDC

Insulation Resistance : L to E $\geq 3000M\Omega$

L to L $\geq 2000M\Omega$

Current reduction above 40°C

ambient temperature: $I=I_n\sqrt{(85-\theta)/45}$

θ = operating temperature

濾波器/規格&型號&尺寸



TYPE	In @ $\delta a 40^\circ C$ [A]	Umax 50/60Hz [v]	Overload Current	Max. leakage current @480v/60hz		Temperature Rise $^\circ C$	Temperature Range $^\circ C$	Fig
				In-3-phase system [mA]	Worst Case [mA]			
HUA-9010-0810-S	3×8	480	1.5×In 1 min.per hour	≤ 2	≤ 3	≤ 30	-25~+85	A
HUA-9010-1210-S	3×12				≤ 3	≤ 30	-25~+85	A
HUA-9010-1610-S	3×16				≤ 3	≤ 30	-25~+85	A
HUA-9010-2510-S	3×25				≤ 3	≤ 30	-25~+85	A
HUA-9010-3610-S	3×36				≤ 3	≤ 30	-25~+85	A
HUA-9020-5010-S	3×50				≤ 3	≤ 30	-25~+85	A
HUA-9020-6410-S	3×64				≤ 3	≤ 30	-25~+85	A
HUA-9020-8010-S	3×80				≤ 3	≤ 30	-25~+85	A
HUA-9020-H110-S	3×110				≤ 3	≤ 30	-25~+85	B
HUA-9020-H125-S	3×125				≤ 3	≤ 30	-25~+85	B

濾波器/規格&型號&尺寸

TYPE	In @ $\delta a 40^{\circ}C$ 〔A〕	Umax 50/60Hz 〔V〕	Overload Current 1.2×In 1 min.per hour	Max. leakage current @480v/60hz		Temperature Rise ℃	Temperature Range ℃	Fig
				In3-phase system (mA)	Worst Case 〔 mA 〕			
HUA-9020-H150-S	3×150	480		≤2	≤3	≤30	-25~+85	B
HUA-9020-H180-S	3×180				≤3	≤30	-25~+85	B
HUA-9020-H200-S	3×200				≤3	≤30	-25~+85	B
HUA-9020-H250-S	3×250				≤3	≤30	-25~+85	C
HUA-9020-H300-S	3×300				≤3	≤30	-25~+85	C
HUA-9020-H350-S	3×350				≤3	≤30	-25~+85	D
HUA-9020-H400-S	3×400				≤3	≤30	-25~+85	D
HUA-9020-H450-S	3×450				≤3	≤30	-25~+85	D
HUA-9020-H500-S	3×500				≤3	≤30	-25~+85	D
HUA-9020-H550-S	3×550				≤3	≤30	-25~+85	D
HUA-9020-H600-S	3×600				≤3	≤30	-25~+85	D
HUA-9020-H650-S	3×650				≤3	≤30	-25~+85	D
HUA-9020-H700-S	3×700				≤3	≤30	-25~+85	D

Order Types (訂購型號說明)

型號:HUA - □ - □ - S

→ S:表示雙π迴路(日規)系列濾波器

→ 0810:表示 8A 額定電流

2510:表示 25A 額定電流

}

H700:表示 700A 額定電流

9010:表示 30A 以下額定使用電流

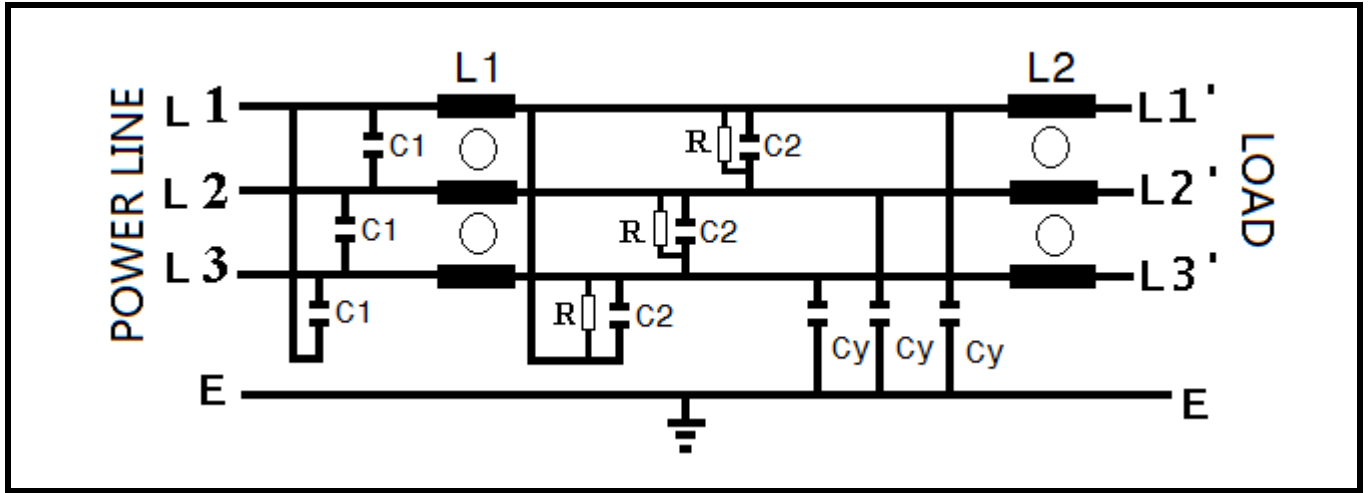
9020:表示 30A 以上額定使用電流

PS:選用濾波器請以變頻器標示全載電流為主要考量

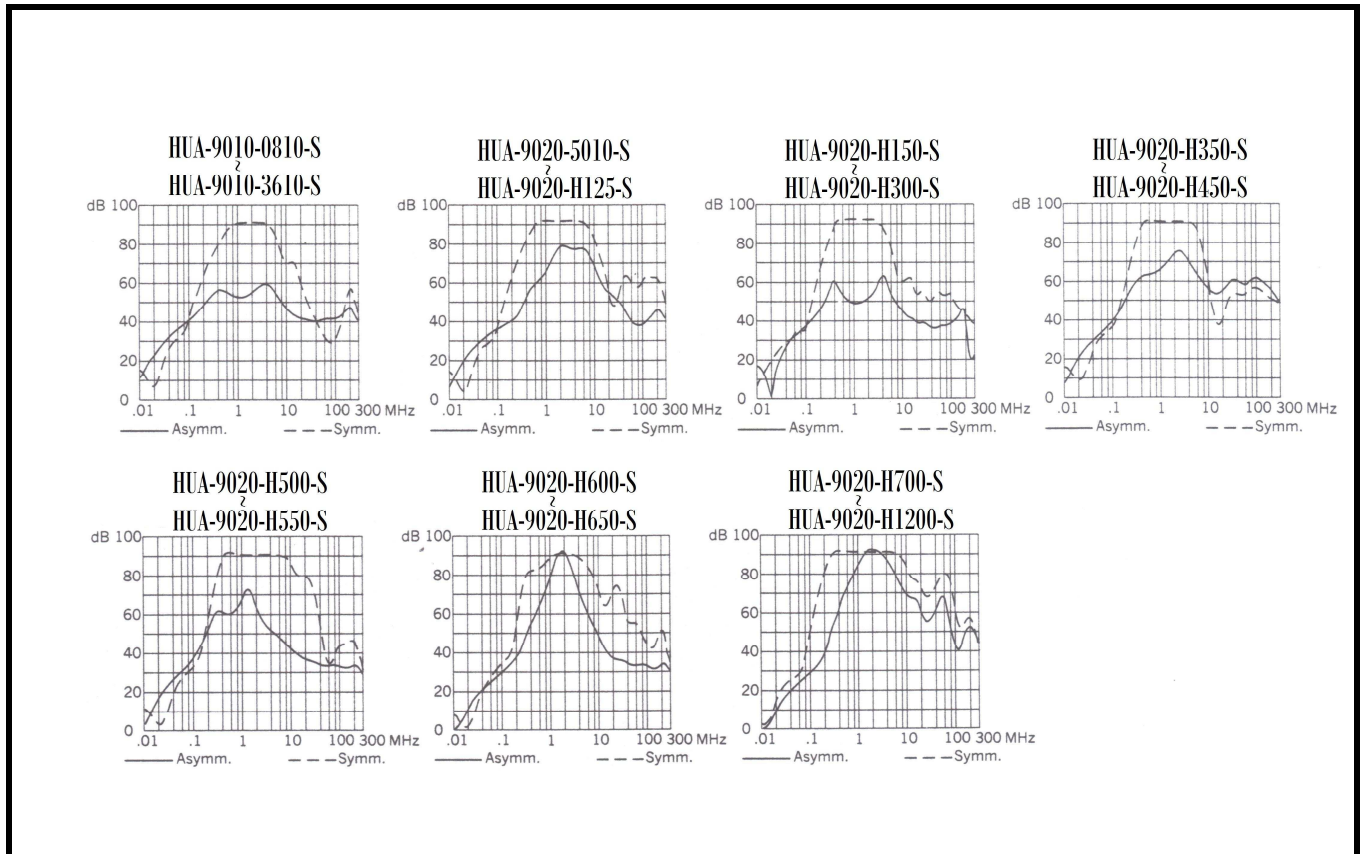
全載電流*1.2~1.5=濾波器安全電流(三相電源請勿除 $\sqrt{3}$ 即可)

變頻器(伺服馬達)馬力 X 746 / 工作電壓 = 工作電流 EX: (INV(HP) X 746(W) / V = A)

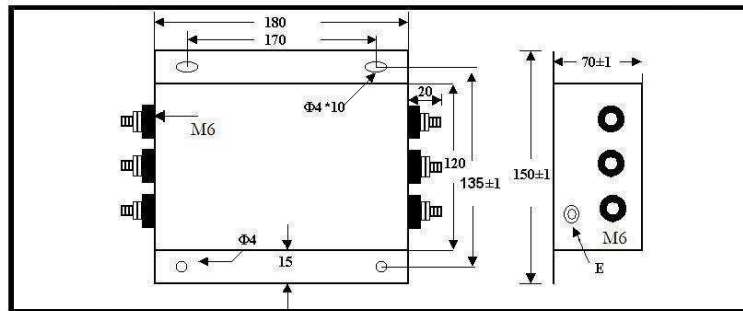
Circuit Diagram (電路圖)



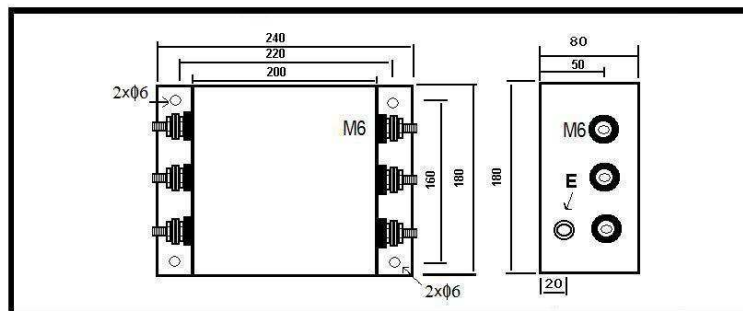
Insertion loss (衰減曲線圖)



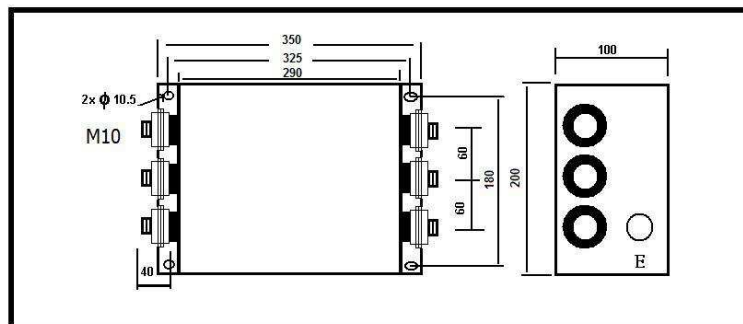
Dimension (外形尺寸圖)



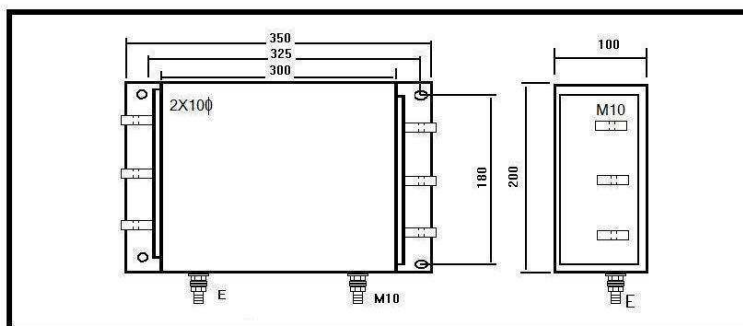
CASE: FIG A 單位:mm



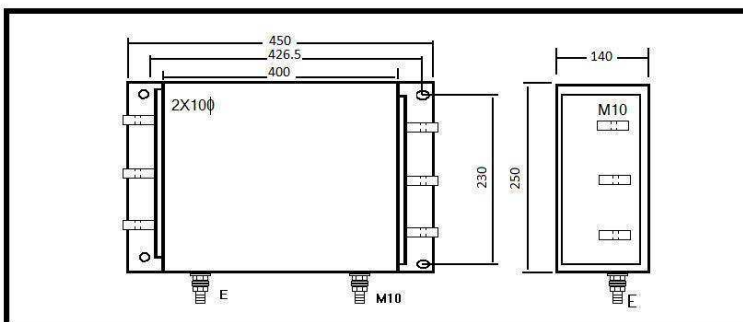
CASE: FIG B 單位:mm



CASE: FIG C 單位:mm



CASE: FIG D 單位:mm



CASE: FIG E 單位:mm