

HUA 高性能/低漏電三相電源雜訊抑制濾波器(雙π迴路) 歐規電路

EMC-High Current/Low leakage Current Line Filters for 3-phase systems EURO

2-stage all-purpose filters to protection Class I , with high symmetrical and asymmetrical insertion loss and low leakage current ,conform to EN133200 ,UL 1283 and IEC 60950

0~480VAC 50/60HZ θ_a 40°C (EMC 2004/108/EC)
(LVD 2006/95/EC)

CONFORMS
TO IEC 60950
UL 1283
EN 133200

CE

This serial for 3-phase 3-line DELTA connection system. It offers a compact and cost-effective solution for suppressing noise in switching power supplies, frequency converters ,as well as power electronic apparatus. For use in energy-saving equipment also have a very nice effect

本系列雙π迴路三相三線式電源濾波器,用於Y或DELTA電源連接系統,適用於開關電源,變頻裝置和電力電子產品.尤其適用於抑制伺服馬達與步進馬達運轉中所產生干擾.實際應用於機器設備上有非常不錯濾除干擾效果.使用於節能設備也有非常不錯效果

SPECIFICATION

Test Voltage (1 min) :L to E 1500VAC/2250VDC
L to L 1500VDC

Insulation Resistance : L to E $\geq 3000M\Omega$
L to L $\geq 2000M\Omega$

Current reduction above 40°C

ambient temperature: $I=I_n\sqrt{(85-\theta)/45}$

θ = operating temperature

濾波器/規格&型號&尺寸



TYPE	In @ $\delta a 40^\circ C$ [A]	Umax 50/60Hz [v]	Overload Current	Resistance L-L' $\pm 15\%$ [m Ω]	Power Dissipation total $\pm 15\%$ [W]	Max. leakage current @480v/60hz		Temperature Rise $^\circ C$	Temperature Range $^\circ C$	Fig
						In3-phase system [mA]	Worst Case [mA]			
HUA-9010-L308	3×8	480	1.5×In 1 min. per hour	55	3.52	≤ 2	≤ 3	≤ 30	-25~+85	A
HUA-9010-L312	3×12			23	3.312		≤ 3	≤ 30	-25~+85	A
HUA-9010-L316	3×16			19	4.864		≤ 3	≤ 30	-25~+85	A
HUA-9010-L325	3×25			10	6.25		≤ 3	≤ 30	-25~+85	B
HUA-9010-L336	3×36			7.5	9.72		≤ 3	≤ 30	-25~+85	B
HUA-9020-L350	3×50			4	10		≤ 3	≤ 30	-25~+85	B
HUA-9020-L364	3×64			3.8	15.5648		≤ 3	≤ 30	-25~+85	B
HUA-9020-L380	3×80			3.5	22.4		≤ 3	≤ 30	-25~+85	B
HUA-9020-L3-H110	3×110			0.75	9.075		≤ 3	≤ 30	-25~+85	B
HUA-9020-L3-H125	3×125			0.7	10.9375		≤ 3	≤ 30	-25~+85	B

濾波器/規格&型號&尺寸

TYPE	In @ $\delta a 40^{\circ}C$ 〔A〕	Umax 50/60Hz 〔V〕	Overload Current	Resistance L-L' $\pm 15\%$ 〔m Ω 〕	Power Dissipation total $\pm 15\%$ 〔W〕	Max. leakage current @480v/60hz		Temperature Rise ℃	Temperature Range ℃	Fig
						In3-phase system 〔mA〕	Worst Case 〔mA〕			
						480		1.2×In 1 min. per hour	≤2	
HUA-9020-L3-H150	3×150			0.6	13.5		≤3	≤30	-25~+85	C
HUA-9020-L3-H180	3×180			0.37	11.988		≤3	≤30	-25~+85	C
HUA-9020-L3-H200	3×200			0.35	14		≤3	≤30	-25~+85	C
HUA-9020-L3-H250	3×250			0.22	13.75		≤3	≤30	-25~+85	C
HUA-9020-L3-H300	3×300			0.11	9.9		≤3	≤30	-25~+85	C
HUA-9020-L3-H350	3×350			0.06	7.35		≤3	≤30	-25~+85	C
HUA-9020-L3-H400	3×400			0.06	9.6		≤3	≤30	-25~+85	D
HUA-9020-L3-H450	3×450			0.06	12.15		≤3	≤30	-25~+85	D
HUA-9020-L3-H500	3×500			0.046	11.5		≤3	≤30	-25~+85	D
HUA-9020-L3-H550	3×550			0.046	13.915		≤3	≤30	-25~+85	D
HUA-9020-L3-H600	3×600			0.046	16.56		≤3	≤30	-25~+85	D
HUA-9020-L3-H650	3×650			0.046	19.435		≤3	≤30	-25~+85	D
HUA-9020-L3-H700	3×700			0.046	22.54		≤3	≤30	-25~+85	D
HUA-9020-L3-H750	3×750			0.046	25.3125		≤3	≤30	-25~+85	D
HUA-9020-L3-H800	3×800			0.046	29.44		≤3	≤30	-25~+85	D

Order Types (訂購型號說明)

型號:HUA - □ -L3 □ - □

無:表示螺絲端子出線
C:表示含口形壓克力保護蓋
E:表示歐規端子台出線

08:表示 8A 額定電流
25:表示 25A 額定電流
H800:表示 800A 額定電流

L3:表示雙π迴路系列濾波器

9010:表示 30A 以下額定使用電流

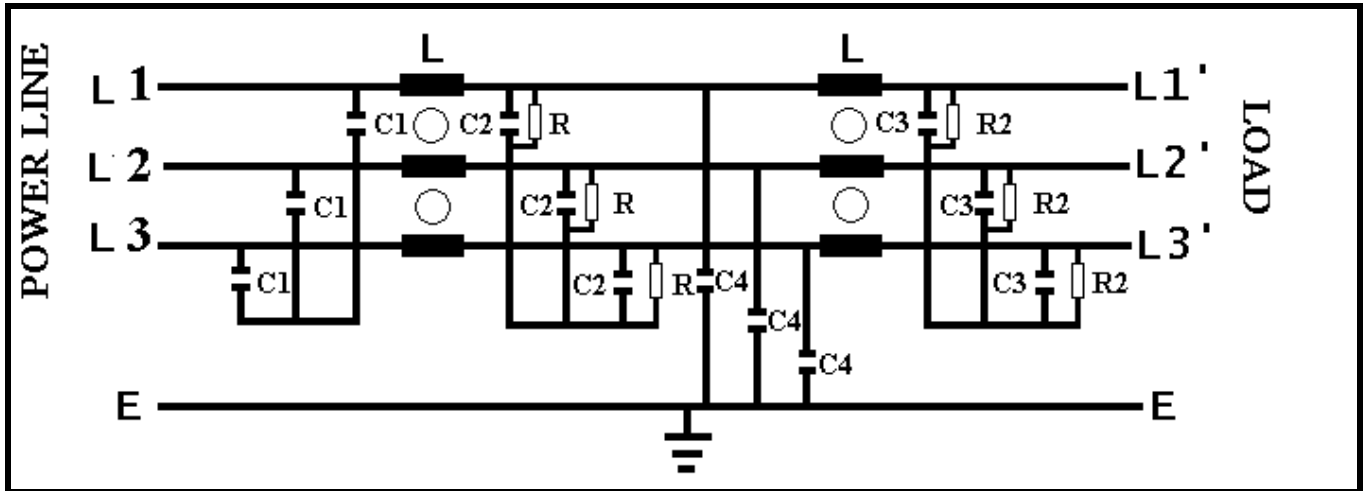
9020:表示 30A 以上額定使用電流

PS:選用濾波器請以變頻器標示全載電流為主要考量

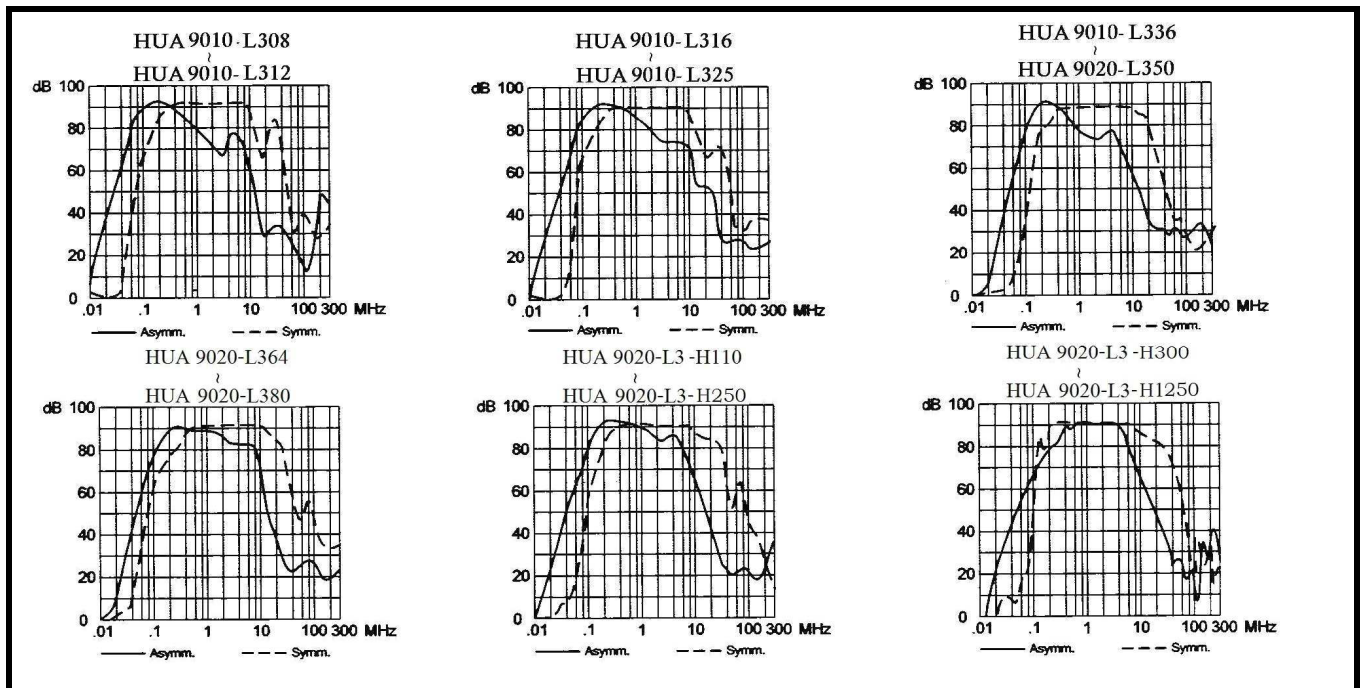
全載電流*1.2~1.5=濾波器安全電流(三相電源請勿除 $\sqrt{3}$ 即可)

變頻器(伺服馬達)馬力 X 746 / 工作電壓 = 工作電流 EX: (INV(HP) X 746(W) / V = A)

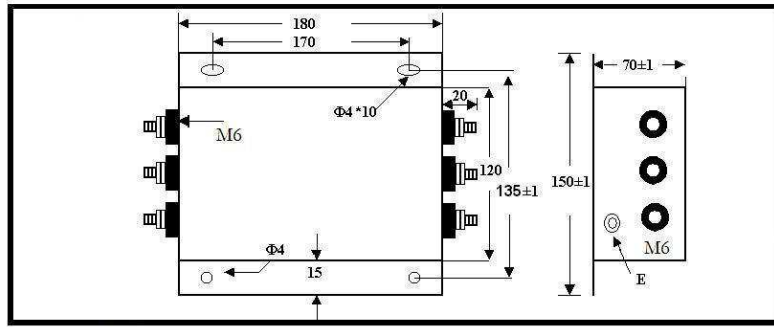
Circuit Diagram (電路圖)



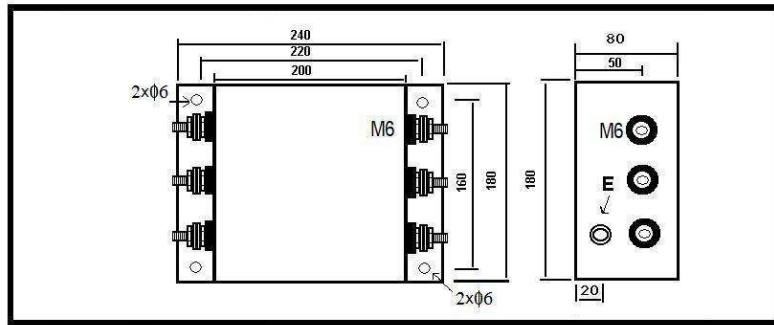
Insertion loss (衰減曲線圖)



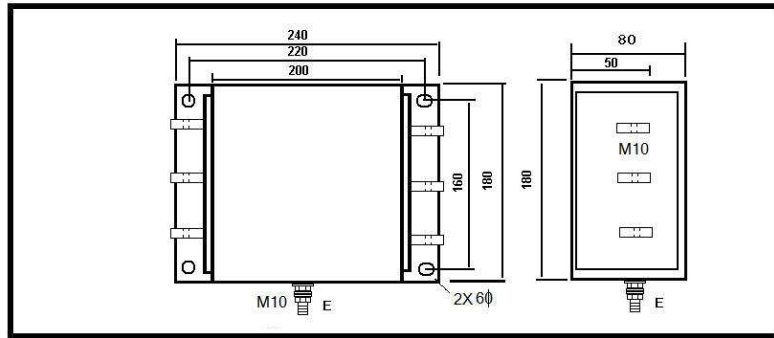
Dimension (外形尺寸圖)



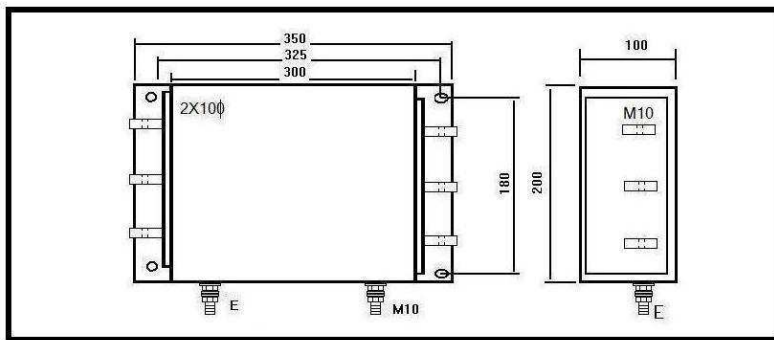
CASE: FIG A 單位:mm



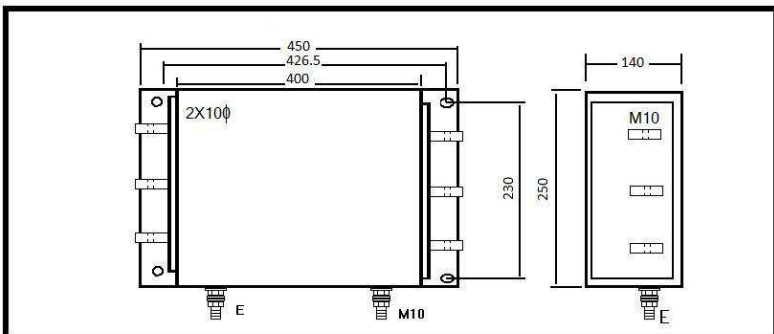
CASE: FIG B 單位:mm



CASE: FIG C 單位:mm



CASE: FIG D 單位:mm



CASE: FIG E 單位:mm