

EMC(日規)小型端子台出線式單相電源雜訊抑制濾波器

EMC Small Terminal Block Outlet Power Line Filter for 1-phase systems (one-stage & 2-stage)

HUA Series, all-purpose filters to Protection Class I.

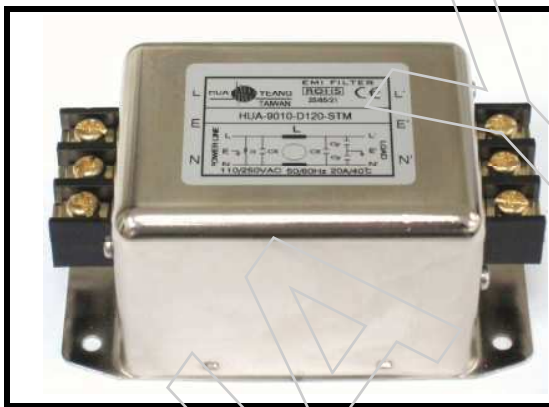
0~250VAC 50/60HZ θ_a 40°C EN55011/CLASS A

CE

CONFORMS
TO IEC 60 950
UL 1283
EN 133200

The STM and SE series terminal block outlet line filters are mounted directly on the panel or DIN rail for quick installation and wiring convenience. This product is used to prevent high-frequency interference power supply, reduce the interference equipment, to provide equipment stability. The product must be installed as close as possible to the power input of the device. The metal housing provides good EMI shielding against high frequency interference from surges.

STM 和 SE 系列端子台出線式電源濾波器直接安裝在面板或 DIN 導軌上，**可以提供快速安裝和接線便利**。本產品用於防止電源的高頻干擾，減弱干擾設備的干擾，提供設備的穩定性。本產品必須盡可能靠近設備的電源輸入端安裝，金屬外殼為抑制浪湧電壓的高頻干擾提供了良好的電磁屏蔽。



專應用於以下

電源系統/電力系統/變頻/數位/通訊系統

照明/檢測設備/醫療儀器/消費電子電器等...

Application

Power System / Power System / Frequency / Digital / Communication System

Lighting / Testing Equipment / Medical Devices / Consumer Electronics ...

Specification

Test Voltage (1min) :

L to E 1500VAC/2250VDC

L to L 1500VDC

Current reduction above 40°C

ambient temperature: $I = I_n \sqrt{(85-\theta)/45}$

Insulation Resistance :

L to E $\geq 3000M\Omega$

L to L $\geq 2000M\Omega$

θ = operating temperature

TYPE	In @ $\delta a 40^\circ C$ [A]	Umax 50/60Hz [v]	Overload Current [1 min. per hour]	Resistance L-L' $\pm 15\%$ [m Ω]	Power Dissipation total $\pm 15\%$ [W]	Max. leakage current @250v/60hz [mA]	Temperature Rise °C	Temperature Range °C
HUA-9010-□101-□	1	0~250	1.2×In	25	0.025	≤ 5	≤ 30	-25~+85
HUA-9010-□103-□	3			24	0.216		≤ 30	-25~+85
HUA-9010-□106-□	6			23	0.828		≤ 30	-25~+85
HUA-9010-□110-□	10			14.2	1.42		≤ 30	-25~+85
HUA-9010-□115-□	15			13	2.925		≤ 30	-25~+85
HUA-9010-□120-□	20			5.8	2.32		≤ 30	-25~+85
HUA-9010-□130-□	30			4.8	4.32		≤ 30	-25~+85

Order Types (訂購型號說明)

型號:HUA - 9010-□1□-□

表示外殼形式

STM: 小型台式端子台 (Small TerMinal)

STMR: 小型台式端子台+軌道安裝(選購) (Small TerMinal+DIN Rail)

SE: 小型歐式端子台 (Small Euro)

SER: 小型歐式端子台+軌道安裝(選購) (Small Euro+ DIN Rail)

01 : 表示 1A 額定電流

30 : 表示 30A 額定電流

D: 表示單 π 迴路(one-stage)

L: 表示雙 π 迴路(2-stage)

EX: HUA-9010-D110-STM

10A/250VAC 單 π 迴路 小型台式端子台
(Single π loop Small TerMinal)

HUA-9010-D110-STM_R

10A/250VAC 單 π 迴路 小型台式端子台 + 軌道安裝(選購)
(Single π loop Small TerMinal + DIN Rail (optional))

HUA-9010-L110-STM

10A/250VAC 雙 π 迴路 小型台式端子台
(2 π loop Small TerMinal)

HUA-9010-L110-STM_R

10A/250VAC 雙 π 迴路 小型台式端子台 + 軌道安裝(選購)
(2 π loop Small TerMinal + DIN Rail (optional))

EX: HUA-9010-D110-SE

10A/250VAC 單 π 迴路 小型歐式端子台
(Single π loop Small Euro)

HUA-9010-D110-SER

10A/250VAC 單 π 迴路 小型歐式端子台 + 軌道安裝(選購)
(Single π loop Small Euro+ DIN Rail (optional))

HUA-9010-L110-SE

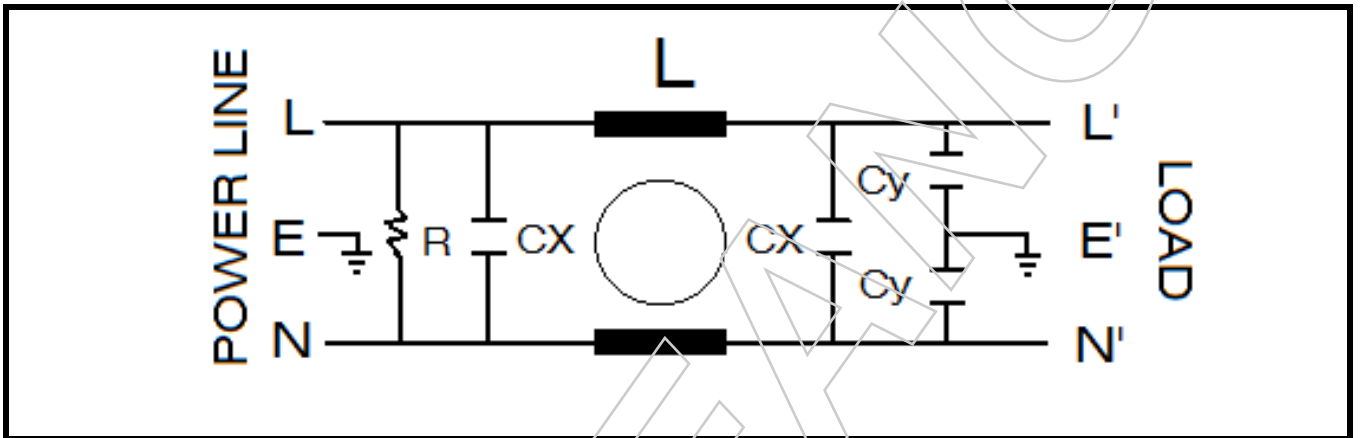
10A/250VAC 雙 π 迴路 小型歐式端子台
(2 π loop Small Euro)

HUA-9010-L110-SER

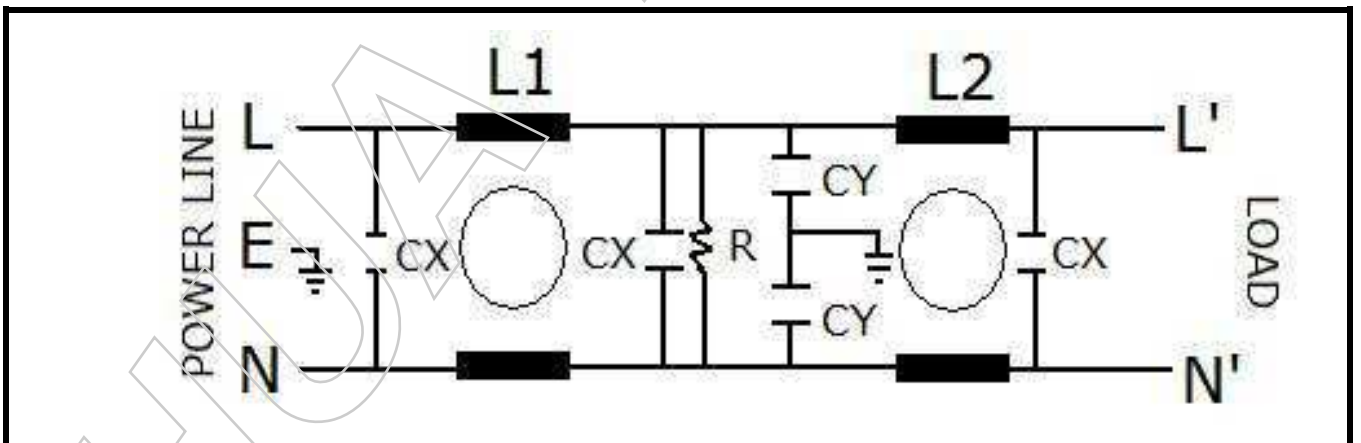
10A/250VAC 雙 π 迴路 小型歐式端子台 + 軌道安裝(選購)
(2 π loop Small Euro+ DIN Rail (optional))

Circuit Diagram(電路圖)

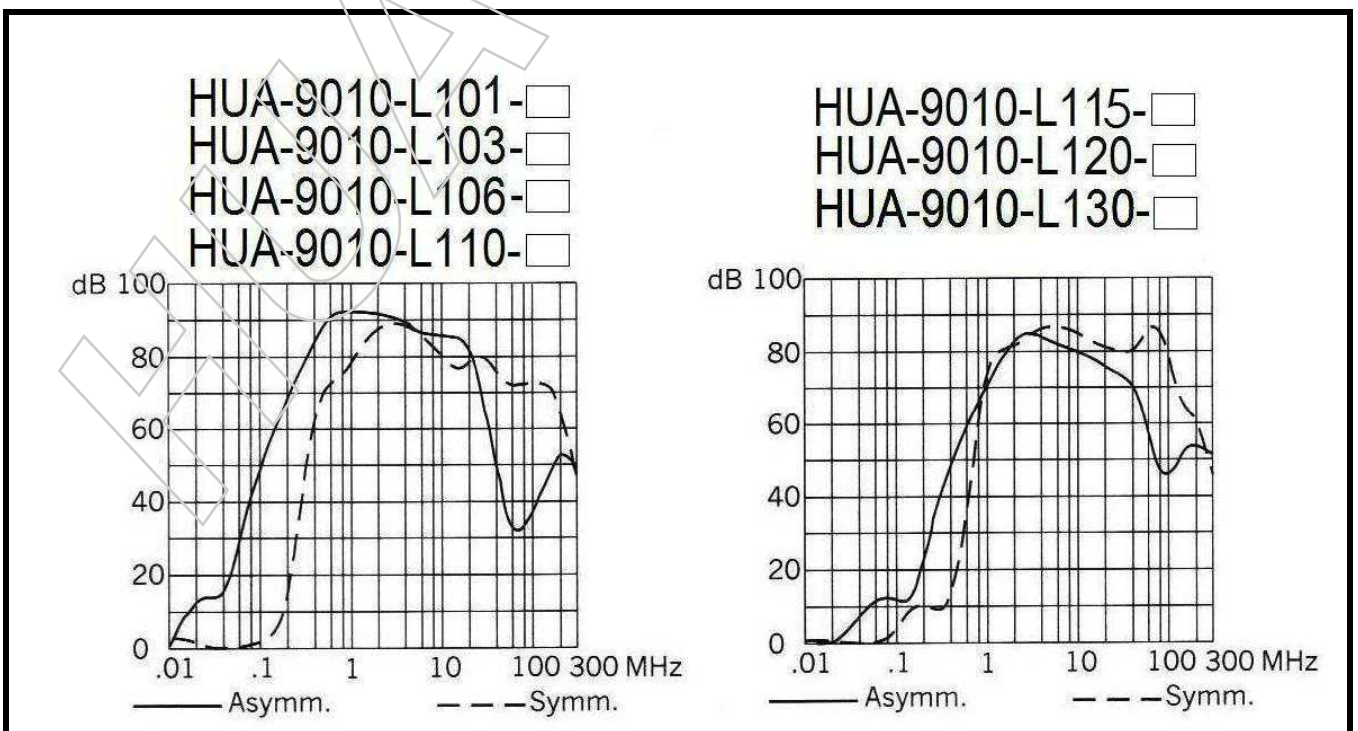
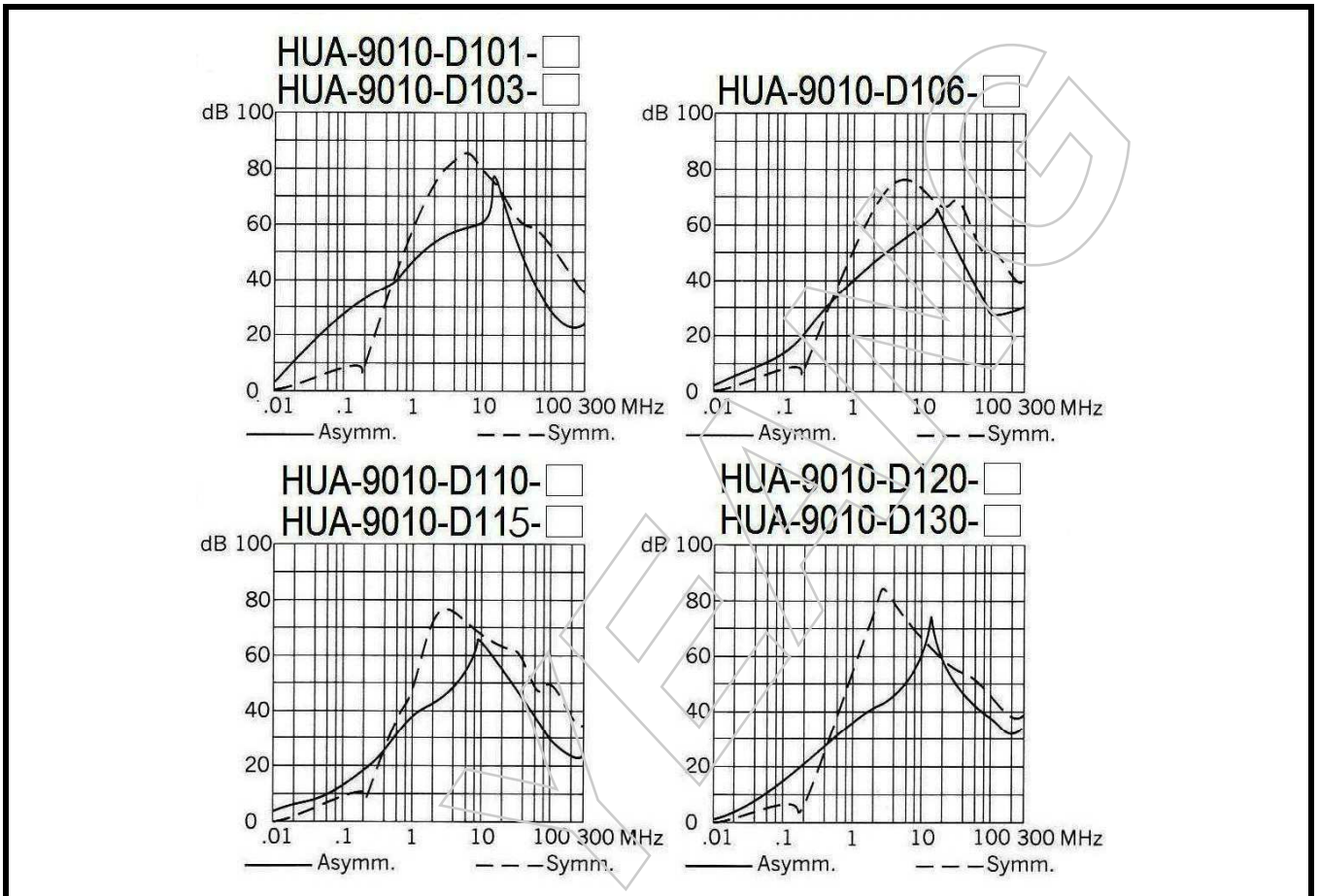
D:單 π 迴路(one-stage)



L:雙 π 迴路(2-stage)



Insertion loss (衰減值)



Dimension(mm) 外殼形式

STM (Small TerMinal)

STMR (Small TerMinal+Rail)

小型台式端子台+軌道安裝 (選購)

1A ~ 20A(單 π 迴路/雙 π 迴路)

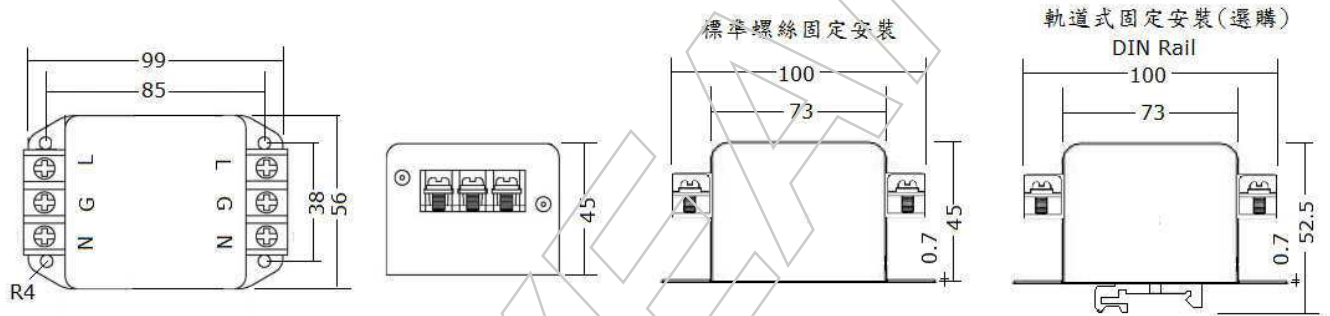


FIG A

30A(單 π 迴路/雙 π 迴路)

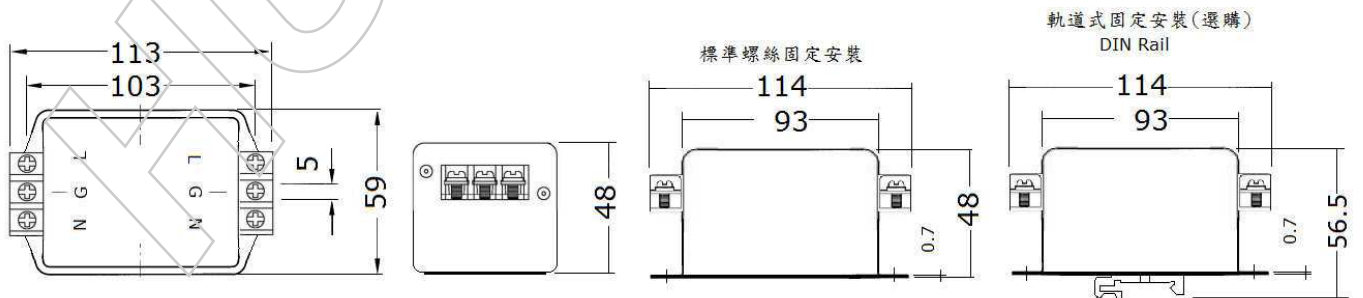


FIG B

Dimension(mm) 外殼形式

SE (Small Euro)

SER (Small Euro+ Rail)

小型歐式端子台+軌道安裝 (選購)

1A ~ 20A(單 π 迴路)

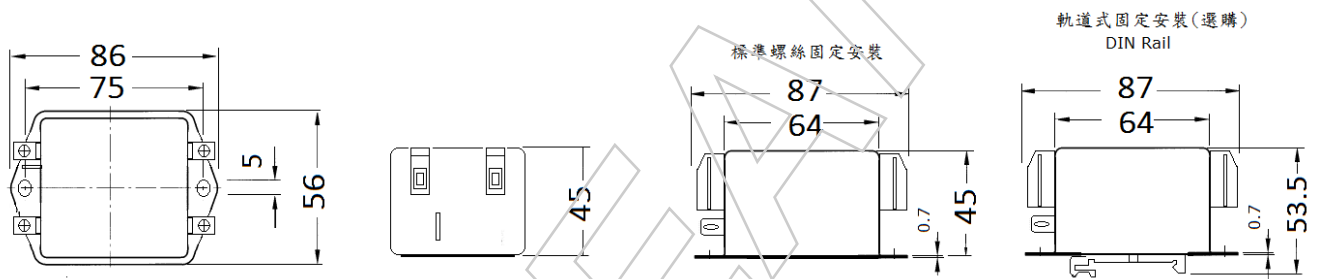


FIG C

1A ~ 30A(雙 π 迴路)

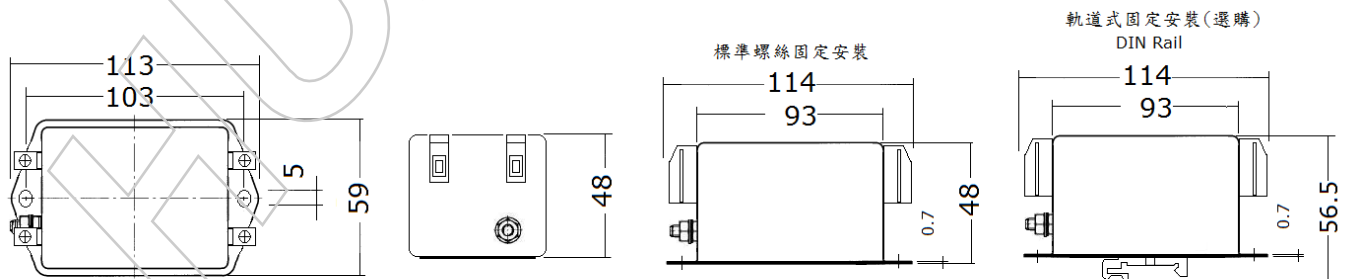


FIG D